



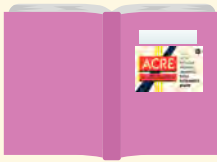
# TYPOGRAPHY

AMNA BADR ALTENEIJI



AMNA BADR ALTENEIJI  
H00416375

# FONT INSPIRATIONS



ACRE FAMILY

The font's creator, Jonathan Ball, reveals that he named it after his great-grandfather, Tex Acre. Tex Acre was a sign artist whose illuminated signs adorned the highways of the Midwest during the mid-20th century. As a result, this font perfectly embodies the mid-century aesthetic.



OLIO

Olio is a chunky sans serif font that's warm and inviting. This bold font is great for anyone who wants to be sure that the characters in their logo can be read.



LIBER

This font was created in the tradition of fonts like Avenir and Futura — but meant to incorporate stylistic developments of the 21st century. The font celebrates the “mathematical purity of geometric circles and clarity of squares.”



ANAHEIM GOTHIC FONT

The Anaheim Gothic Font is inspired by vintage logos. It comes with multilingual support for more than 22 languages, as well as full upper and lower case.



WAVEHAUS SANS TYPEFACE

This font comes with six different weights — thin, light, book, semibold and extra bold. It is simple but funky, which means it could be great a company or organization with character.



POLLY

Polly is extremely minimalistic and straightforward. It comes in four different weights



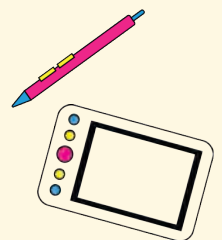
# THE CONCEPT

## THE ART OF GEOMETRIC SHAPES





# SKETCHES



# SKETCHES

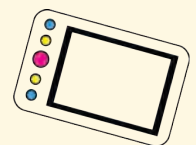


AMNA BADR ALTENEIJI

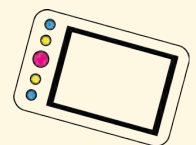
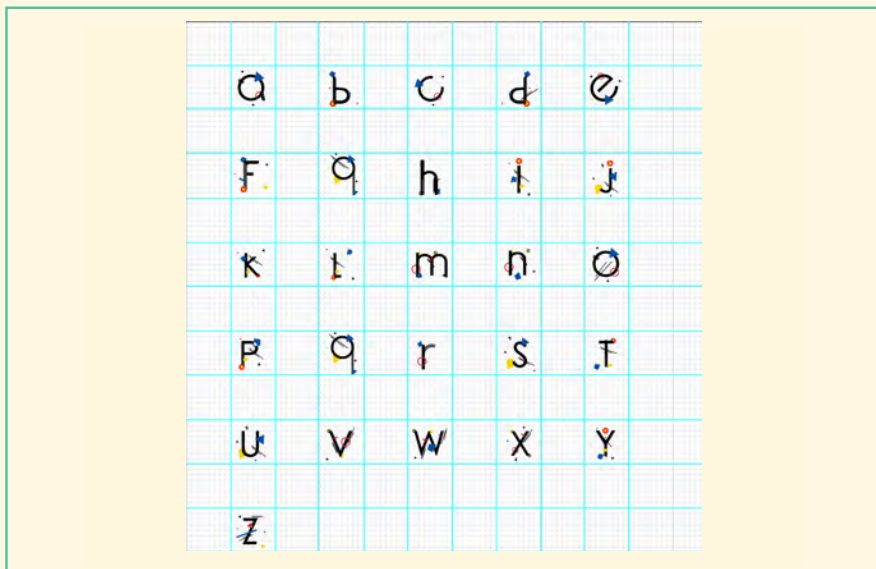
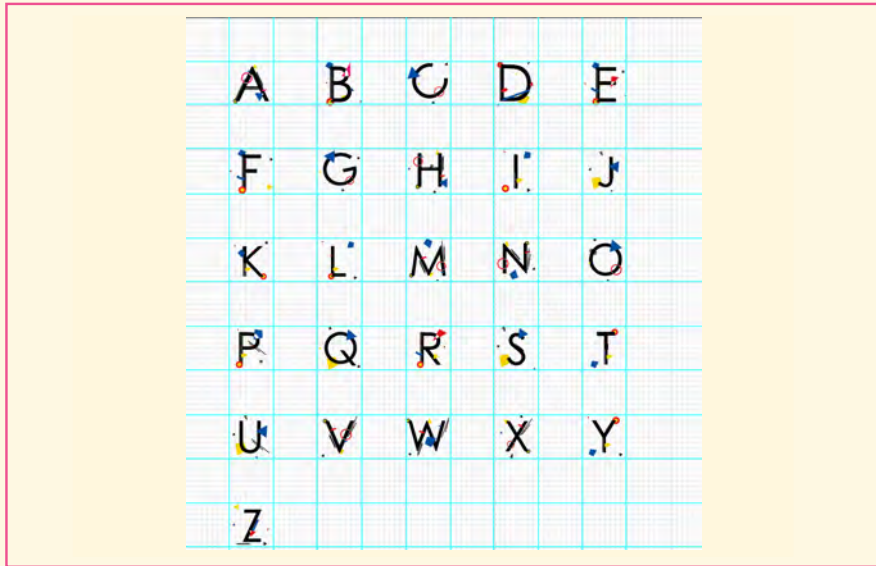
A B C D E F G H I i  
J K L M N O P Q R  
S T U V W X Y Z

a b c d e f g h i  
j k l m n o p q r  
s t u v w x y z

0 1 2 3 4 5 6 7 8 9



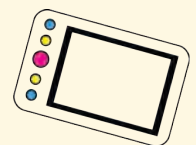
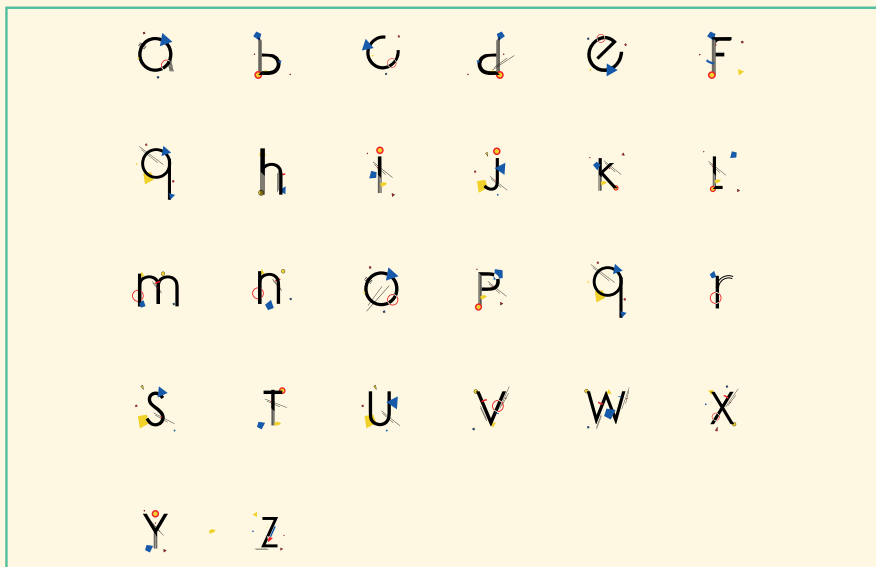
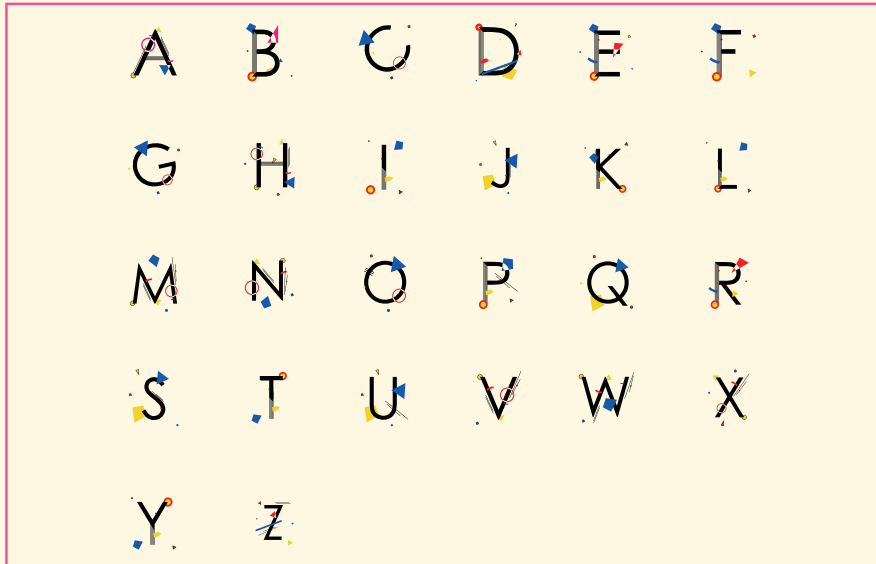
# SKETCHES



# SKETCHES



T



# SKETCHES

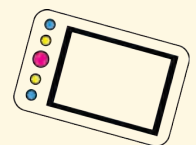


A B C D E F G H I J  
K L M N O P Q R S T  
U V W X Y Z

a b c d e f g h i j  
k l m n o p q r s t  
u v w x y z

0 1 2 3 4 5 6 7 8 9

3



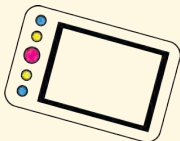


# SKETCHES



AMNA BADR ALTENEIJI

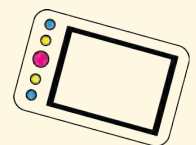
4



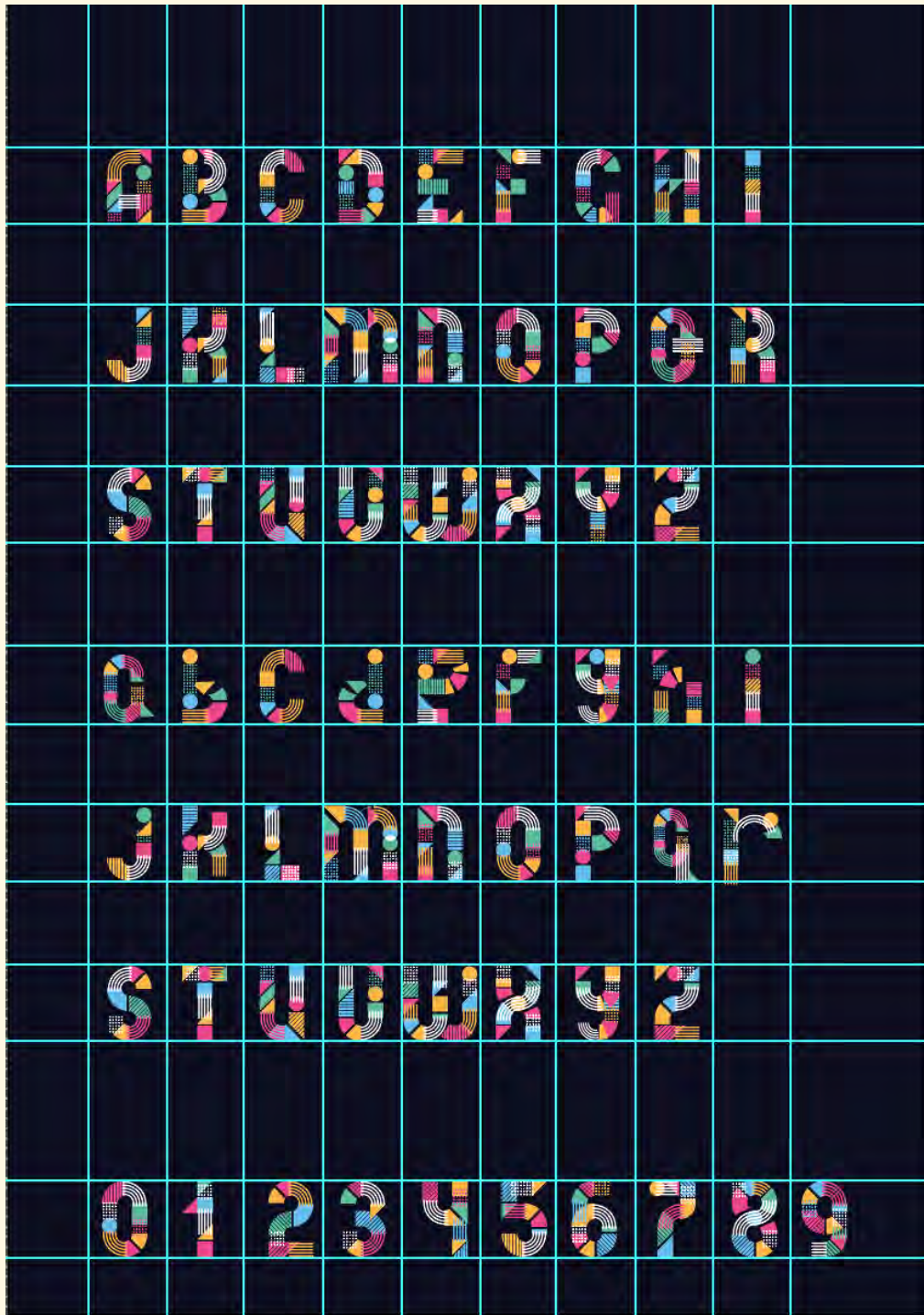
# SKETCHES



4

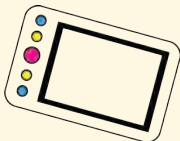


# SKETCHES



AMNA BADR ALTENEIJI

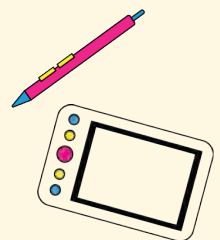
5



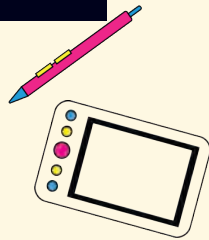
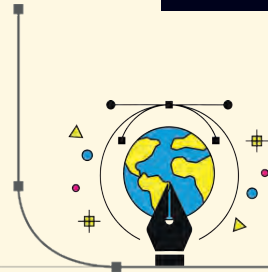


T

# FINAL SKETCHES OF ALPHABETS AND NUMBERS



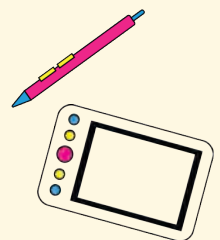
# FINAL SKETCHES OF ALPHABETS AND NUMBERS





T

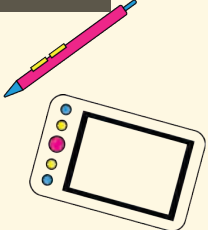
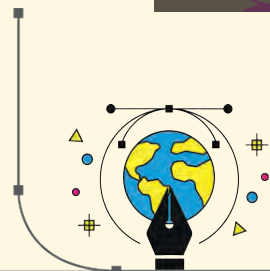
# FINAL POSTER WITH THE FONT



# FINAL POSTER WITH THE FONT



AMNA BADR ALTENEIJI

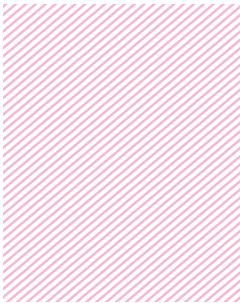


AMNA BADR ALTENEIJI

# FINAL POSTER WITH THE FONT

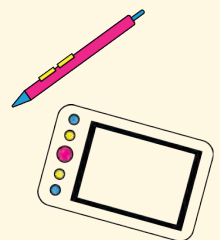


YOU ARE MORE  
STRONGER  
THAN YOU THINK!



67006  
H00916375

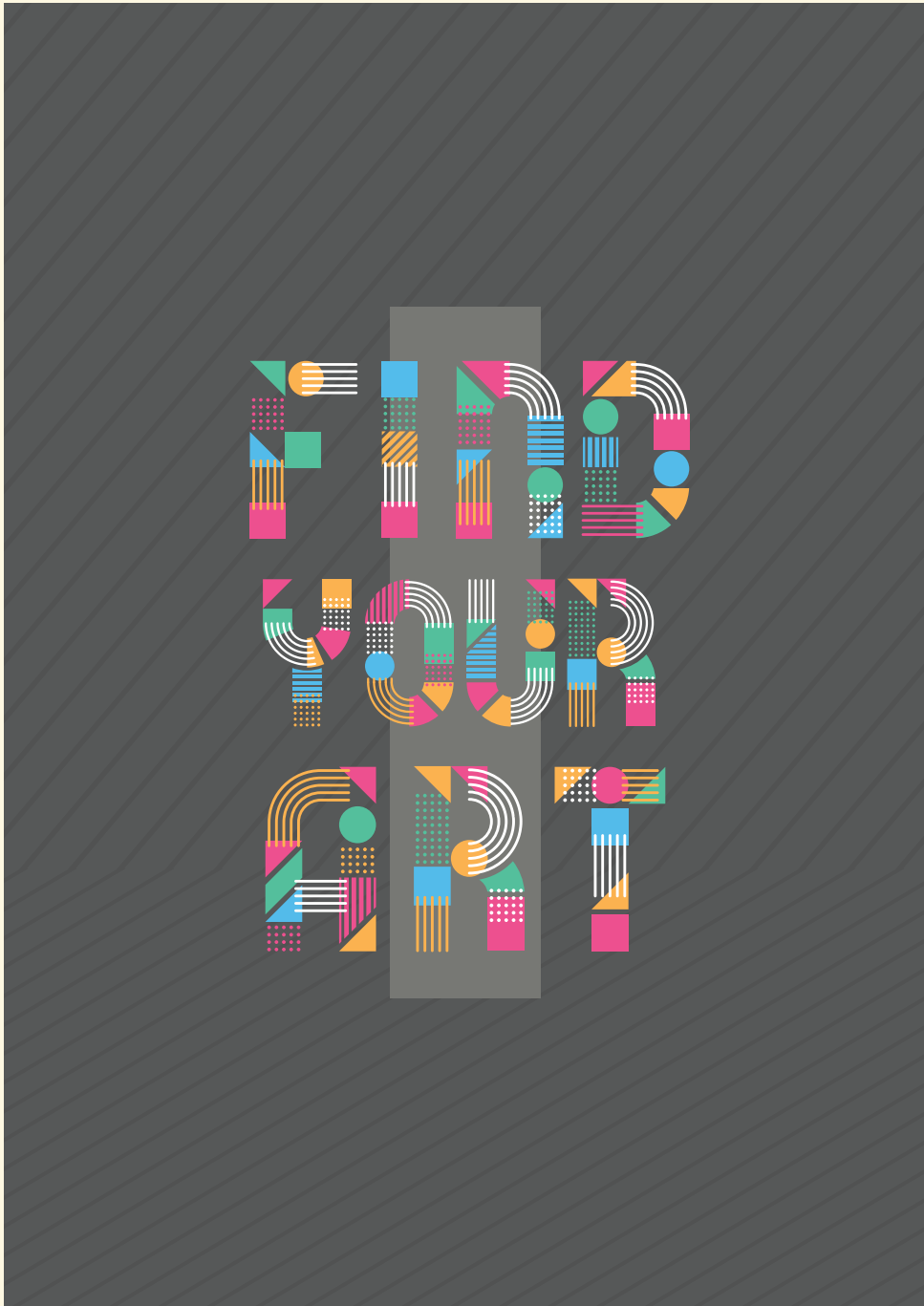
AMNA BADR ALTENEIJI



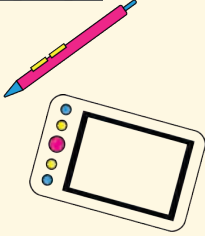
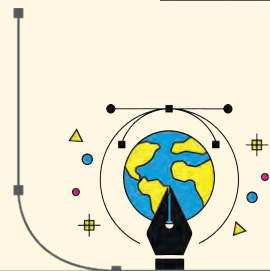
AMNA BADR ALTENEIJI



# FINAL POSTER WITH THE FONT



AMNA BADR ALTENEIJI



AMNA BADR ALTENEIJI

